

Advanced Electronic Signs

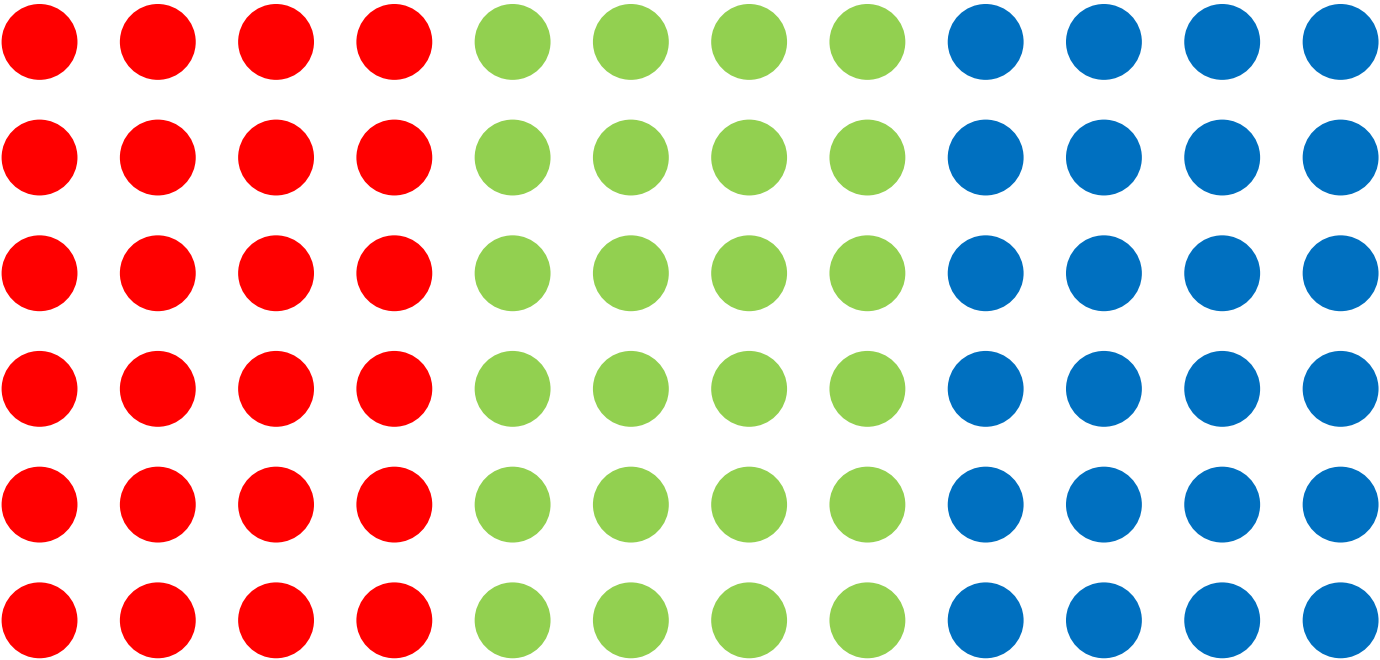


Table of Contents

Warranty.....	4
Return Merchandise Authorization	5
Remote Control Diagram.....	6
Menu List.....	7
Effect Descriptions	8
Creating A Message(s)	9
Insert Text Message	9
Copy A Message	10
Insert Time.....	10
Insert Date	10
Insert Image Message	10
Insert Video Message (Available Only with FC Models)	11
Insert User Image (Available Only with FC Models)	11
Insert User Video (Available Only with FC Models)	11
Modifying A Message(s).....	11
Insert A Message(s)	12
Play List.....	12
Delete A Message(s).....	13
Delete One.....	13
Delete All	13

Table of Contents

Set Time.....	13
Time	13
Date	13
Time On.....	13
Time Off.....	13
User Set.....	14
Timer	14
Sound	14
Password.....	14
Brightness.....	14

Note: Due to continuing product innovation, specifications in this document are subject to change without notice. Please contact your dealer for in new updates or information.

Warranty

SunRise LED Inc. warrants the original purchaser that the SunRise LED display and remote will be free of defects in workmanship and materials for a period of one year from the date of purchase.

SunRise LED Inc. will without charge, repair or replace, at its option, defective product or component parts upon delivery to our service department accompanied by proof of the date of purchase in the form of a sales receipt.

The warranty does not apply in the event of any misuse or abuse of the product, or as a result of any unauthorized repairs or alterations. This warranty does not apply if the serial number is altered, defaced or removed from the sign.

The purchase price of this product does not include, from SunRise LED Inc, any on-site support, service or maintenance.

Local ordinances prohibiting the use of flashing signs may exist in some locations. Compliance with local ordinances is the sole responsibility of the customer.

To obtain warranty coverage, this product must be registered. Please complete the enclosed warranty registration card and mail it to SunRise LED Inc. 598 Patterson Blvd. Pleasant Hill, CA 94523.

How to obtain warranty service

1. Contact the distributor from whom the sign was purchased. If you do not know where the product was purchased, contact SunRise LED Inc. (800) 660-4414.
2. If the distributor cannot service the product, obtain a Return Merchandise Authorization (RMA) number through that company. An RMA number is required to obtain warranty service.
3. Fill out the Return Merchandise Authorization (RMA) Form on the following page. To obtain warranty service, this form including the RMA number must accompany the product.
4. Follow return instructions on the RMA form to return to SunRise LED Inc.

Return Merchandise Authorization (RMA) Form

RMA Number: _____

Serial Number: _____

Date of Purchase: _____

Company Name: _____

Contact Person: _____

Address: _____

Phone Number: _____

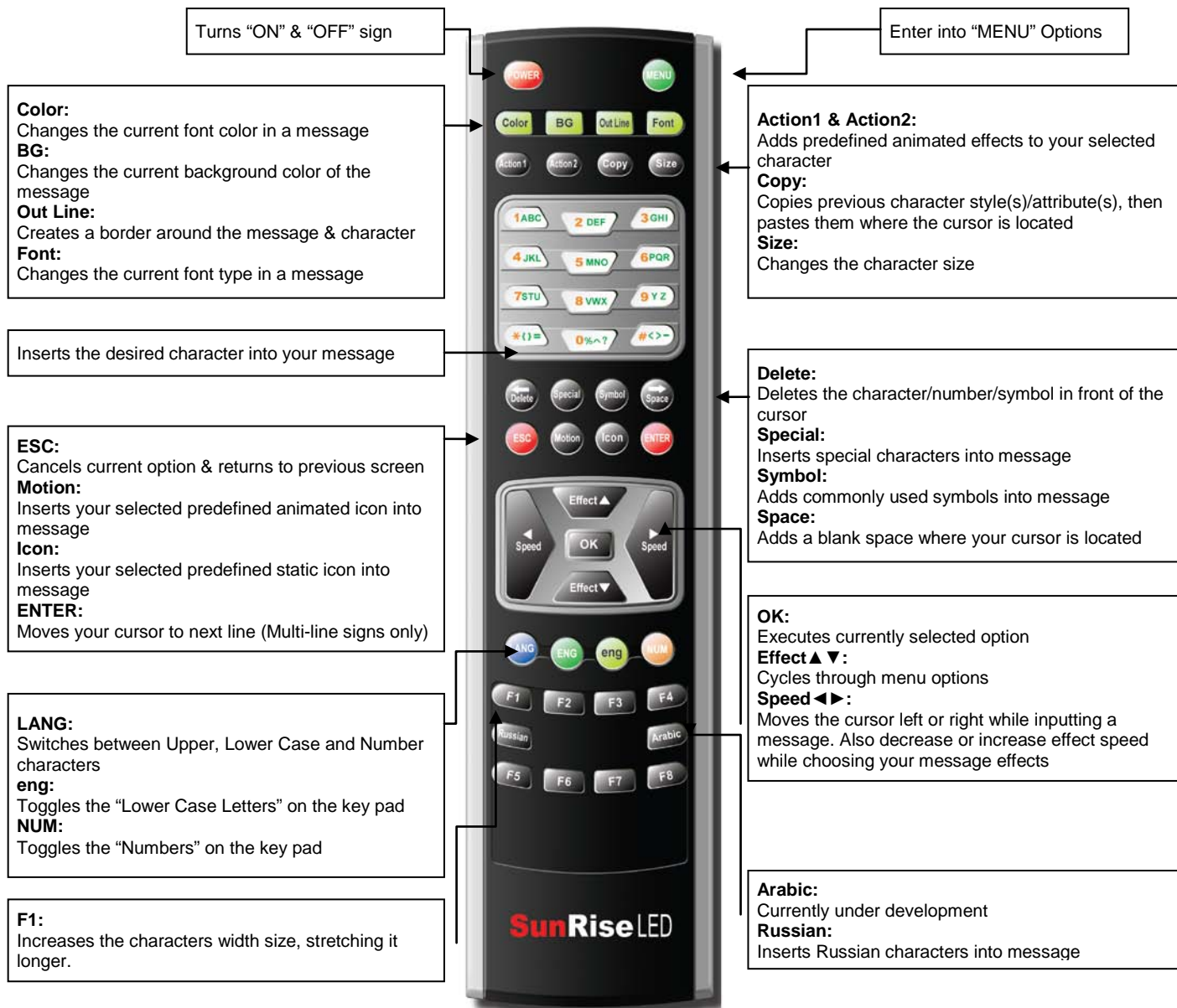
Description of Problem: _____

Return Instructions

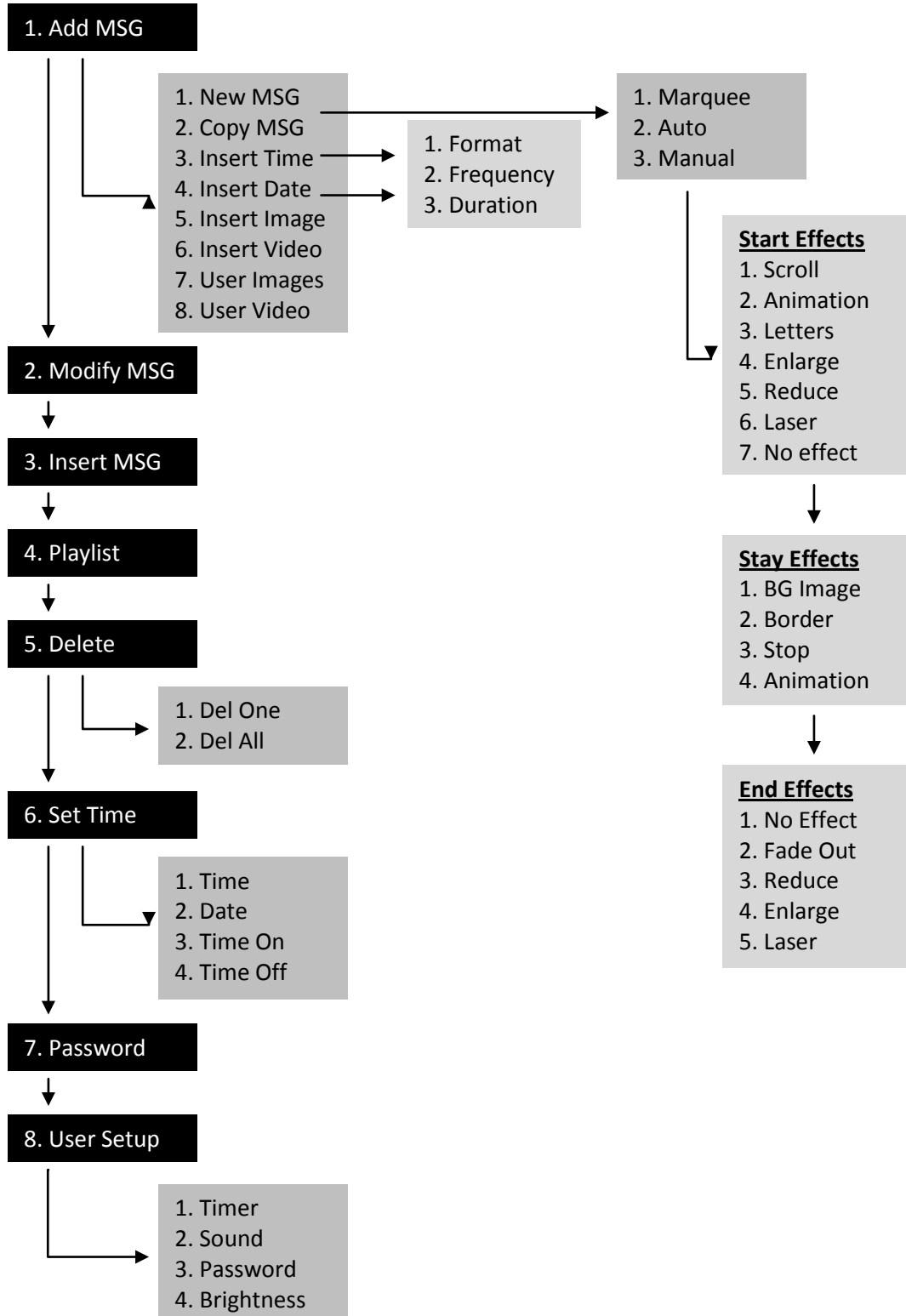
- Step 1: Obtain an RMA number from your distributor
- Step 2: Fill out this form and include proof of purchase receipt if product is under warranty.
- Step 3: Pack this form, the sign, remote control and transformer in the original carton (or a suitable replacement). Please write the RMA number on the outside of the package.
Any damage to the product during shipment is the responsibility of the freight company or the owner of the sign.
- Step 4: Ship the package, postage prepaid to:
SunRise LED Inc.
598 Patterson Blvd.
Pleasant Hill, CA 94523

**PLEASE BE SURE TO WRITE THE RMA NUMBER ON THE LABEL OF THE SHIPPING BOX.
THANK YOU.**

Remote Description



Menu List



Disclosure:
This menu list is subjected to change for different model types.

Effect Descriptions

Start Effects

1.) Auto	Quick programming through pre-stored effects
2.) Marquee	Quick programming of scroll effect. Do not need to select wait effect, wait time & end effect.
3.) Scroll	The message enters scrolling to screen.
4.) Animation	Various moving effects can be selected.
5.) Letters	The message spells out letter by letter.
6.) Enlarge	The message appears from small too big.
7.) Reduce	The message appears from big too small.
8.) Laser	The message appears as like laser.
9.) No Effect	The message appears with no effect.

Stay Effects

1.) BG Image	The message displays with a background images.
2.) Border	The message displays with a border line.
3.) Stop	The message displays with no designated effect.
4.) Animation	The message display with a back ground animations.

End Effects

1.) No Effect	The message appears with no effect.
2.) Fade Out	The message fades out the display as it goes to the next message
3.) Reduce	The message reduces in size off the display as it goes to the next message
4.) Enlarge	The message increases in size off the display as it goes to the next message
5.) Laser	The message disappears as like laser.

Create A Message(s)

This menu section is used to create a new message on your LED display sign. You will be able to input a variety of messages and apply effects to them. This will give your display a rich and dynamic presence.

1.) Insert Text Message

Add a new message to your LED Sign, using the **Auto** effect option.

Menu → (1. Add MSG) → OK → (1. New MSG) → OK → {Input your message} → OK → "Select a start effect" → (Choose a start effect , UU1, Auto, using effect buttons) → OK → "Completed" → Menu → "Save OK?" → OK

Add a new message to your LED Sign, using the **Manual** effect option.

Menu → (1. Add MSG) → OK → (1. New MSG) → OK → {Input your message} → OK → "Select a start effect" → (Choose a start effect, 2, Manual, using effect buttons) → OK → {Preview your selection. If you dislike it hit the **ESC** button to return to the selection screen} → OK → "Select a wait effect" → {Choose wait effect using effect buttons} → {Preview your selection. If you dislike it hit the **ESC** button to return to the selection screen} → OK → "Select a wait time" → {Choose wait time (1~60 seconds) using effect buttons} → OK → "Select an end effect" → {Choose end effect using effect buttons} → {Preview your selection. If you dislike it hit the **ESC** button to return to the selection screen} → OK → "Completed" → Menu → "Save OK?" → OK

TIP

How to change color, background, actions, size, outline & font of letter:

After typing any letter follow the instruction below.

- Move cursor behind the character. Press **color** button to change the character color.
- Move cursor behind the character. Press **background (BG)** button to change the background color of character.
- Move cursor behind the character. Press **attribute (Action 1 & 2)** button to change the character animation.
- Move cursor behind the character. Press **size** button to change character size.
- Move cursor behind the character. Press **outline** button to change the characters outline color.
- Move cursor behind the character. Press **font** button to change the characters font.
- Move cursor behind the character. Press **F1** button to increase the characters width size.

2.) Copy A Message

This option will copy an existing message that you will be able to modify into a new message.

Menu ↵ (1. Add MSG) ↵ OK ↵ (2. Copy) ↵ OK ↵ {Select a message that you want to copy using effect buttons} ↵ OK ↵ {Change your message if you desire to} ↵ OK ↵ “Select a start effect” ↵ (Choose a start effect, 2. Manual, using effect buttons) ↵ OK ↵ {Preview your selection. If you dislike it hit the **ESC** button to return to the selection screen} ↵ OK ↵ “Select a wait effect” ↵ {Choose wait effect using effect buttons} ↵ {Preview your selection. If you dislike it hit the **ESC** button to return to the selection screen} ↵ OK ↵ “Select a wait time” ↵ {Choose wait time (1~60 seconds) using effect buttons} ↵ OK ↵ “Select an end effect” ↵ {Choose end effect using effect buttons} ↵ {Preview your selection. If you dislike it hit the **ESC** button to return to the selection screen} ↵ OK ↵ “Completed” ↵ Menu ↵ “Save OK?” ↵ OK

3.) Insert Time

Inserts the current time onto your display. The time is setup by you in the **7. Set Time** section.

Menu ↵ (1. Add MSG) ↵ OK ↵ (3. Insert Time) ↵ OK ↵ (1. Format) ↵ OK ↵ {Select time format using effect buttons} ↵ OK ↵ (1. Format) ↵ {push the down ▼ effect button once} ↵ (2. Frequency) ↵ {Set how often you want the time to display using effect buttons} ↵ OK ↵ (2. Frequency) ↵ {push the down ▼ effect button once} ↵ (3. Duration) ↵ OK ↵ {Set how long (1~60seconds) the time will be displayed using effect buttons} ↵ OK ↵ (3. Duration) ↵ ESC ↵ (1. Time) ↵ Menu ↵ “Save OK?” ↵ OK

4.) Insert Date

Inserts the current date onto your display. The date is setup by you in the **7. Set Time** section.

Menu ↵ (1. Add MSG) ↵ OK ↵ (4. Insert Date) ↵ OK ↵ (1. Format) ↵ OK ↵ {Select time format using effect buttons} ↵ OK ↵ (1. Format) ↵ {push the down ▼ effect button once} ↵ (2. Frequency) ↵ {Set how often you want the time to display using effect buttons} ↵ OK ↵ (2. Frequency) ↵ {push the down ▼ effect button once} ↵ (3. Duration) ↵ OK ↵ {Set how long (1~60seconds) the time will be displayed using effect buttons} ↵ OK ↵ (3. Duration) ↵ ESC ↵ (1. Time) ↵ Menu ↵ “Save OK?” ↵ OK

5.) Insert Image Message

Menu ↵ (1. Add MSG) ↵ OK ↵ (5. Insert Images) ↵ OK ↵ {Select an image that you want to insert using effect buttons} ↵ {Select the speed of your selection using speed buttons} ↵ OK ↵ {Select how many times it will repeat using effect buttons} ↵ OK ↵ “Completed” ↵ Menu ↵ “Save OK?” ↵ OK

6.) Insert Video Message

Menu → (1. Add MSG) → OK → (6. Insert video) → OK → {Select an image that you want to insert using effect buttons} → {Select the speed of your selection using speed buttons} → OK → {Select how many times it will repeat using effect buttons} → OK → “Completed” → Menu → “Save OK?” → OK

7.) Insert User Image *(Any image needs to be uploaded through computer program SunNet before using this menu.)*

Menu → (1. Add MSG) → OK → (7. User images) → OK → {Select an image that you want to insert using effect buttons} → {Select the speed of your selection using speed buttons} → OK → {Select how many times it will repeat using effect buttons} → OK → “Completed” → Menu → “Save OK?” → OK

8.) Insert User Video *(Any video needs to be uploaded through computer program SunNet before using this menu.)*

Menu → (1. Add MSG) → OK → (8. User video) → OK → {Select an image that you want to insert using effect buttons} → {Select the speed of your selection using speed buttons} → OK → {Select how many times it will repeat using effect buttons} → OK → “Completed” → Menu → “Save OK?” → OK

TIP

How to input animated images, icons, static images and symbols:

After typing any letter follow the instruction below.

- Press **Special** button to input animated images and icons.
- Press **Icon** button to input static images and icons.
- Press **Symbol** button to select & insert various symbols into your message at the cursor location.

Modify A Message(s)

The “Modify MSG” menu is used to edit an existing message. You can change the entire look and feel of that particular message.

Menu → (1. Add MSG) → OK → (2.Modify MSG) → OK → {Select the message that you want to modify, 1-XX amount} → (Change or correct your message) → OK → “Select a start effect” → (Choose a start effect, 2. Manual, using effect buttons) → OK → {Preview your selection. If you dislike it hit the **ESC** button to return to the selection screen} → OK → “Select a wait effect” → {Choose wait effect using effect buttons} → {Preview your selection. If you dislike it hit the **ESC** button to return to the selection screen} → OK → “Select a wait time” → {Choose wait time (1~60 seconds) using effect buttons} → OK → “Select an end effect” → {Choose end effect using effect buttons} → {Preview your selection. If you

dislike it hit the **ESC** button to return to the selection screen} OK
 “Completed” {Returned to selection screen} ESC (2. Modify MSG)
 Menu “Save OK?” OK

Inserting A Message(s)

The “Insert MSG” menu is used to add a new message on your LED display sign before an existing one.

Menu (1. Add MSG) (3.Insert MSG) OK {Select the message that you want to insert a new message above, 1-XX amount} {Input your message} OK “Select a start effect” (Choose a start effect, 2. Manual, using effect buttons) OK {Preview your selection. If you dislike it hit the **ESC** button to return to the selection screen} OK “Select a wait effect” {Choose wait effect using effect buttons} {Preview your selection. If you dislike it hit the **ESC** button to return to the selection screen} OK “Select a wait time” {Choose wait time (1~60 seconds) using effect buttons} OK “Select an end effect” {Choose end effect using effect buttons} {Preview your selection. If you dislike it hit the **ESC** button to return to the selection screen} OK “Completed” {Returned to selection screen} ESC (3. Insert MSG) Menu “Save OK?” OK

Play List

The “Playlist” menu is used to activate / deactivate a message(s) on your LED display sign. It serves as a turn on and off function

“O” -- Activate Option

“X” -- Deactivate Option

Menu (1. Add MSG) (4. Playlist) OK {Select a message that you need to activate or deactivate, 1-XX amount, using the effect buttons} OK (Preview the selected message) ESC (Returned to selection screen) {Select activation “O” or deactivation “X” using speed buttons} ESC (4. Playlist) Menu “Save OK?” OK

Delete A Message(s)

The "Delete" menu is used to remove messages stored in your LED display sign.

1.) Delete One

Menu → (1. Add MSG) → (4. Delete) → OK → (1. Del One) → OK →
 {Select a message, 1-XX amount, that you want to delete using effect
 buttons} → OK → "Delete OK?" → OK → {Returned to selection screen}
 → ESC → (1. Del One) → Menu → "Save OK?" → OK

2.) Delete All

Menu → (1. Add MSG) → (4. Delete) → OK → (2. Del All) → OK →
 "Delete OK?" → OK → (1. Del All) → Menu → "Save OK?" → OK

Set Time

The "Set Time" Menu is used to set the internal clock and date system on your LED display sign; as well as setting up the automatic "Turn-On" and "Turn-Off" function.

1.) Time

Menu → (1. Add MSG) → (6. Set Time) → OK → (1. Time) → OK → {Set
 local time using effect & speed buttons} → OK → (1. Time) → Esc → (6.
 Set Time) → Menu → "Save OK?" → OK

2.) Date

Menu → (1. Add MSG) → (6. Set Time) → OK → (2. Date) → OK → {Set
 local time using effect & speed buttons} → OK → (2. Date) → Esc → (6.
 Set Time) → Menu → "Save OK?" → OK

3.) Time On *(For the usage of this function, Timer function at 8. User Setup - 1.Timer should be activated)*

Menu → (1. Add MSG) → (6. Set Time) → OK → (3. Time On) → OK →
 {Set local time using effect & speed buttons} → OK → (3. Time On) → Esc
 → (6. Set Time) → Menu → "Save OK?" → OK

4.) Time Off *(For the usage of this function, Timer function at 8. User Setup - 1.Timer should be activated)*

Menu → (1. Add MSG) → (6. Set Time) → OK → (4. Time Off) → OK →
 {Set local time using effect & speed buttons} → OK → (4. Time Off) → Esc
 → (6. Set Time) → Menu → "Save OK?" → OK

User Set

The “User Set” menu is used to set the various options for your LED display sign.

“Yes” -- Activates Option

“No” -- Deactivates Option

1.) Timer *(Automatic turn-on and off function can be activated or deactivated here)*

Menu → (1. Add MSG) → (8. User Set) → OK → (1. Timer) → OK →
{Select Yes or No using effect buttons} → OK → (1. Timer) → ESC → (8.
User Set) → Menu → “Save OK?” → OK

2.) Sound *(Beep can be activated or deactivated here)*

Menu → (1. Add MSG) → (8. User Set) → OK → (2. Sound) → OK →
{Select Yes or No using effect buttons} → OK → (2. Sound) → ESC → (8.
User Set) → Menu → “Save OK?” → OK

3.) Password *(Password function can be activated or deactivated here)*

Menu → (1. Add MSG) → (8. User Set) → OK → (3. Password) → OK →
{Select Yes or No using effect buttons} → OK → (3. Password) → ESC →
(8. User Set) → Menu → “Save OK?” → OK

2.) Brightness *(Brightness can be set here)*

Menu → (1. Add MSG) → (8. User Set) → OK → (4. Brightness) → OK →
{Select your desired time for AM and PM and level, 1-10, using effect
buttons} → OK → (4. Brightness) → ESC → (8. User Set) → Menu →
“Save OK?” → OK