

VersaNetTM
S Y S T E M



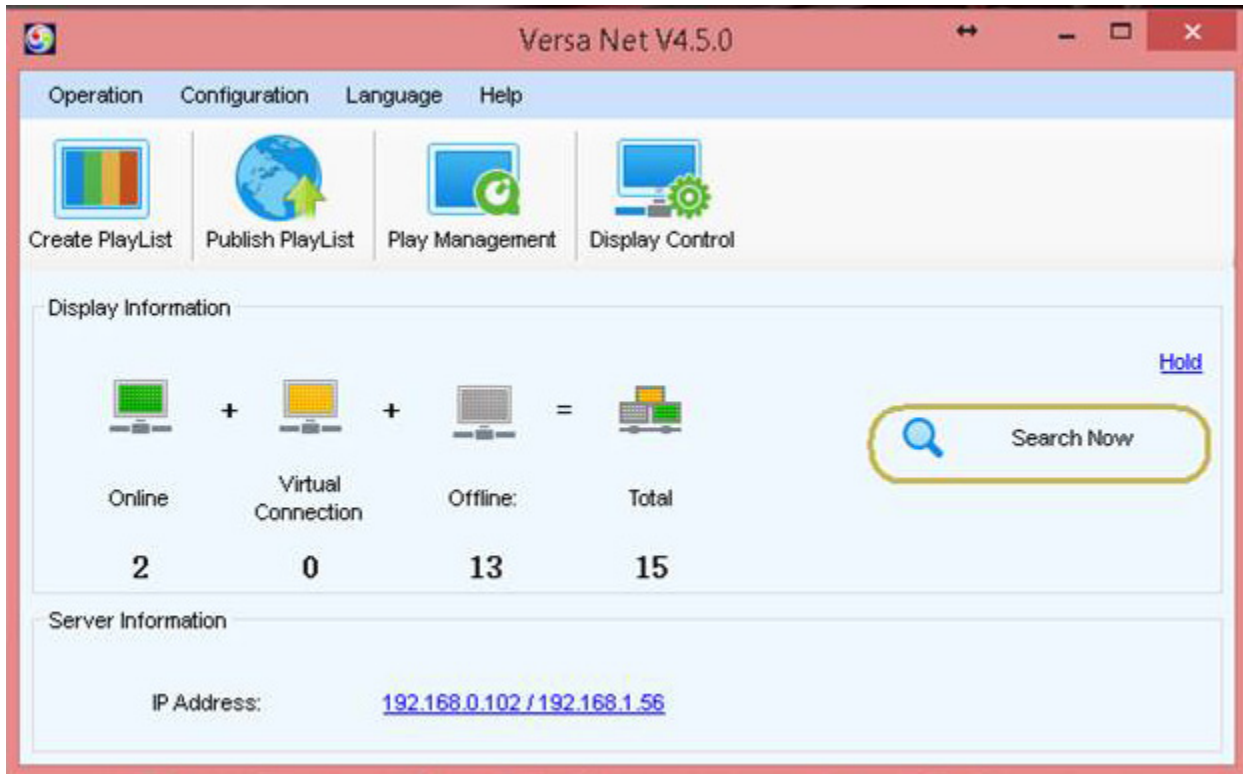
2015 Operation Manual

REV 2.0

TABLE OF CONTENTS

I. VersaNet interface - overview	4
II. VersaNet sign interface - overview	4
III. VersaNet sign interface - button definitions	5
IV. Adding your display to VersaNet	7
V. Selecting VersaNet's sign interface	8
VI. Creating a playlist	9
VI. - 1: Adding media to your playlist	10
VI. - 2: Working with windows	11
VII. Working with transparencies	14
VIII. Sending a playlist to your display	15
IX. Viewing your playlist schedule with edit list	17
IX. Updating your font list in VersaNet	18
XI. VersaNet play management.....	19
XI. - 1: Play control	20
XII. - 2: Log management	20
XIII. - 3: Storage management	21
XII. VersaNet display control	22
XII. - 1: System config	22
XII. - 2: Brightness controls	23
XII. - 3: Power management and scheduling	25

I. VERSANET INTERFACE - OVERVIEW



VersaNet Main Interface

When you first open VersaNet you will see the VersaNet main interface. This window has controls for everything you need to operate any SunRise LED Display. Please take a moment to familiarize yourself with the user interface by reading through the **Overview Section** of this guide spanning the next several pages.

In this window you can, at a glance, see how many Displays you have connected to VersaNet, which of your Displays are currently Online or Offline, the screen size of each Display and the server IP Address (click Details to expand the amount of information presented for each Display in this window).

VersaNet Main Interface Button Functions



Create PlayList

Create Playlist - Create and edit Playlists



Publish PlayList

Publish Playlist - Publish saved Playlists to your Displays



Play Management

Play Management - Manage storage, play logs and play control



Display Control

Display Control - Manages core Display functions like Brightness, Power Scheduling and Server settings

III. VERSANET SIGN INTERFACE - INDIVIDUAL BUTTONS

File Menu Button Functions



New - Starts a new file to create a Playlist from scratch



Open - Opens an existing Playlist



Save - Save the current Playlist



Save As - Save the current Playlist with a different name



Setting - Change/set the current Playlist dimensions



Edit List - Changes interface to editing view (for editing Playlist content)



Schedule - Changes interface to scheduling view (for a general overview of Playlist scheduling information)



Web Resource - Opens a browser window inside of VersaNet



Preview - Shows a preview of your Playlist WITHOUT scheduling



Play - Shows a preview of your Playlist WITH scheduling



Pause - Pauses Playlist preview playback



Stop - Stops Playlist preview playback



Refresh - Restarts Playlist preview playback from the beginning



Send - Send Playlist to displays

Frame Menu Button Functions



Add - Adds a new Frame



Copy - Copies a Frame



Paste - Paste a copied Frame



Up - Moves the currently selected Playlist up one spot in the Frame Window



Down - Moves the currently selected Playlist down one spot in the Frame Window

Input Menu Button Functions



Text - Insert text into the current Window



File - Insert a media file into the current Window



Analog Clock - Insert a customizable analog clock into the current Window



Digital Clock - Insert a customizable digital clock into the current Window



Timer - Insert a customizable countdown/countup timer into the current Window



Temperature and Humidity - Insert a real-time temperature and humidity feed into the current Window



Weather - Insert a real-time weather feed into the current Window



Plus - Zooms in view of current Window incrementally



Zoom - Quickly zoom in/out of the current Window by all available zoom levels



Minus - Zooms out view of current Window incrementally

Frame Control Button Functions



Window Layout - Select from prearranged Window layouts



Window Selection - Select individual Windows for manipulation



Window Statistics - Displays the current Window size and offsets



Window Up - Moves selected Window's top edge up

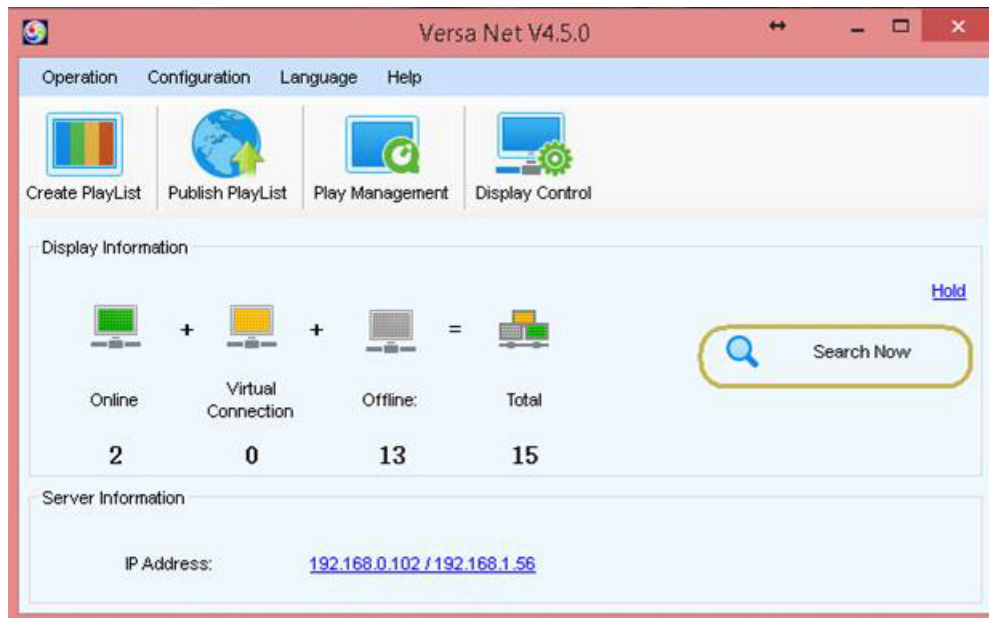


Window Right - Moves selected Window's right edge to the right



IV. ADDING YOUR DISPLAY TO VERSANET

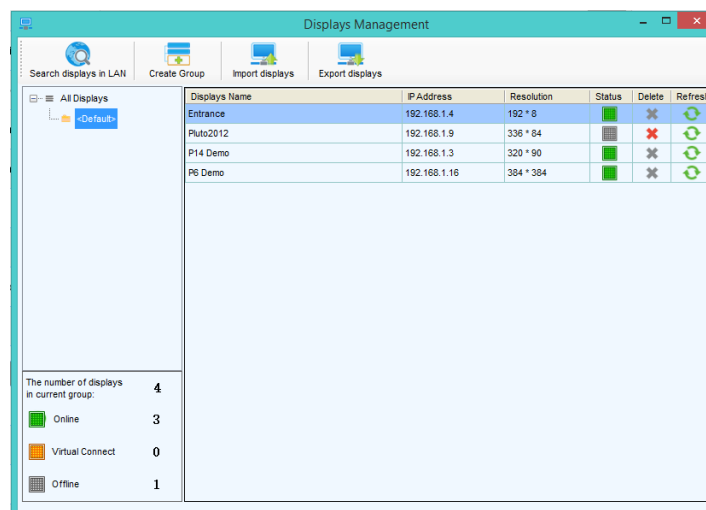
In order to start using VersaNet with your SunRise LED Display you first need to configure the software to recognize your Display. VersaNet can be configured to work with multiple displays at once using either wireless or hard wired LAN connections on multiple networks.



VersaNet main interface

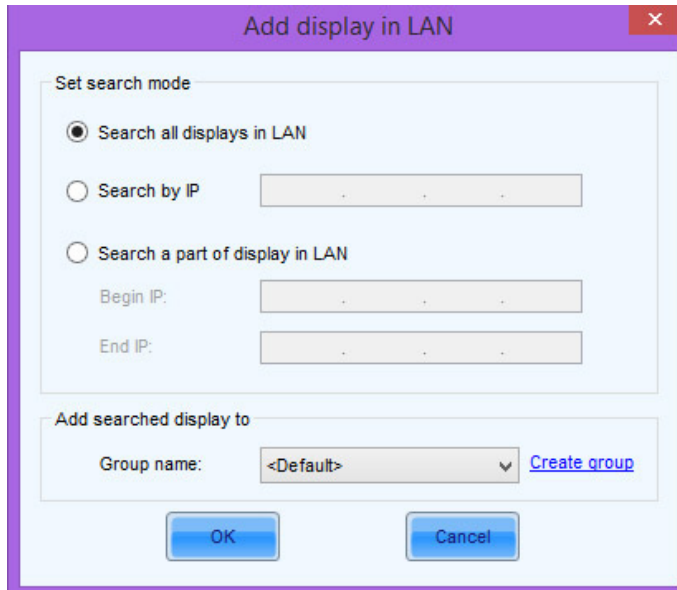
Make sure your **Display**, **Computer** and **Controller** (if you are using an external controller) are all powered on with the appropriate connections (Display - main power and data feeds, power and data jumpers between panels if applicable; Controller - power and data feeds in, data feed to the display, wireless if applicable; Computer - connected to the network and powered on, wireless turned on if applicable). Next select **Search Now** from the main VersaNet interface. You should see your display represented as being online under the **Online** graphic in the center of the interface.

If you do not see your display, click the **Hold** button to expand the interface, then click **Display Management** to bring up the management window. Now select **Search Displays in LAN**.



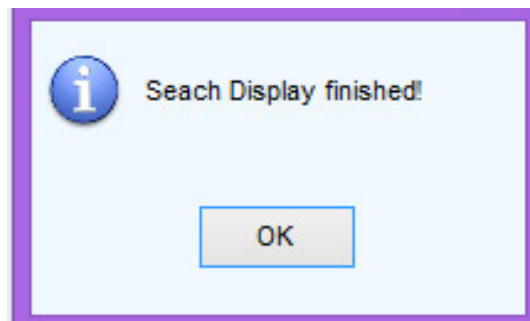
Display Management window

In the Display Management window select **Search Display in LAN**.



Add Display in LAN window

Next, make sure the **Search all Displays in LAN** radio button is selected and click the **OK** button. If you already know the IP address of your Display you can also search by specific IP address or a range of IP addresses.

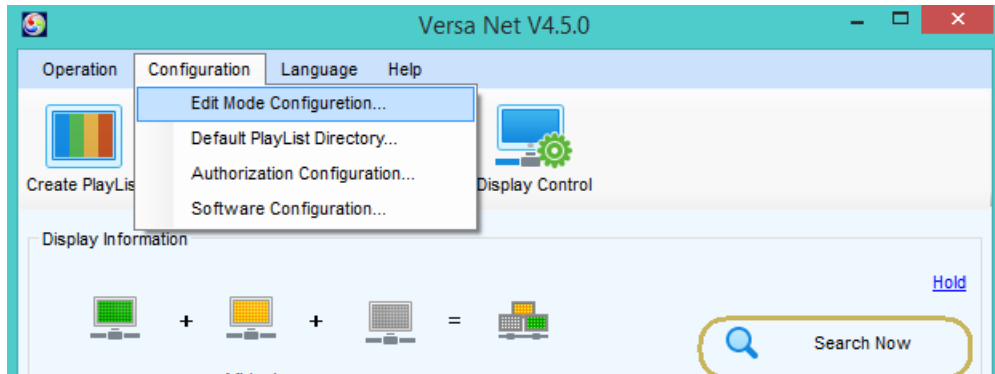


Display search confirmation window

Once VersaNet has finished looking for your Display click the **OK** button in the popup window. You should now see your Display listed with a green circle (It may take around 5 seconds for the circle to turn green and indicate your Display is online). Congratulations! You have successfully added your Display to VersaNet and can now begin creating Play List!

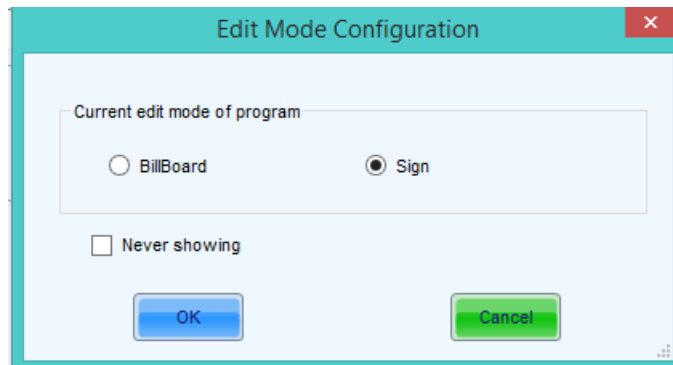
V. SELECTING VERSANET'S SIGN INTERFACE

VersaNet has the ability to switch between 2 user interfaces, **Billboard** and **Sign**, and each interface is optimized for different Display scenarios. While the **Sign** interface is ideal for small signs like gas station displays and readerboards, the **Billboard** interface is setup for large billboard advertising and event programming where complete control over input/output programming variables is desired. By default VersaNet will show the Sign user interface. The following steps will turn on the Sign user interface if you do not already have it set as your default.



Versa Net user interface configure menu option

To set the VersaNet user interface to Sign mode, in the file menu select **Configuration>Edit Mode Configuration**.

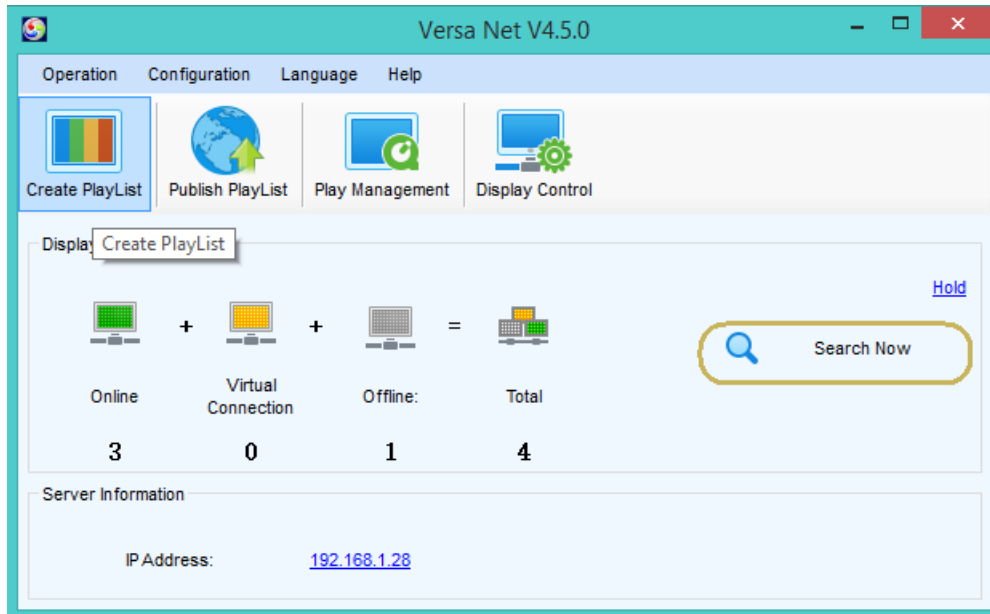


User Interface selection screen

Make sure the **Sign** radio button is selected, then click the **OK** button. Now when you create a new Playlist you will be using VersaNet's sign user interface. You can always go back to the Billboard version by following these same steps and selecting Play-program in the user interface selection screen.

VI. CREATING A PLAYLIST

The following instructions on creating a Playlist assume that you've elected to use the Sign user interface. Before proceeding for the first time it is advised that you double check your user interface selection to make sure you've selected the correct interface.



Create a Playlist

V1. - 1: Adding media to your playlist

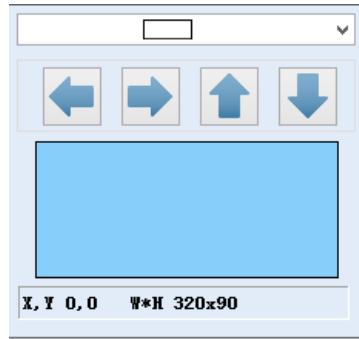
To create a Playlist select **Create Playlist** from the main interface in VersaNet.

* Playlist can be saved in the directory indicated in the main VersaNet interface (**Configuration>Default Playlist Save Directory**). Generally, the default directory is ideal but you can designate any directory on your computer or network to save your Playlist. Once you set your directory it is important not to change it or you will lose all Playlists that have previously been saved to that directory.

* Each Playlist is comprised of frames that are made up of individual Window(s). Each Window can contain one type of media (Text, Media File, Analog Clock, Digital Clock, Timer, Temperature & Humidity and Weather). Frames themselves are the same size as your display and windows can be any combination of size and position.

* Each frame can be scheduled to play at a specific time, day of the week, date and/or month in the bottom section of the interface by clicking the blue text reading "Schedule". The lower most Frame in each Playlist has priority over the Frames above it so be careful to avoid scheduling conflicts by adjusting the order of your Frames accordingly. You can also preview your schedule using the small calendar icon at the top of the interface and you can export play logs that will tell you what specific files have been playing, when they have played as well as when any files failed to play.

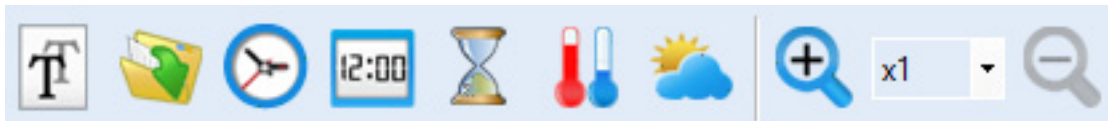
* If you are connected to more than one display or if your Playlist dimensions do not match the dimensions of your display it's important to change the size settings. To change the Playlist dimensions if you have more than one display go to **Settings>Choose Display** and select your display from the list. To change the Playlist dimensions if you have only one display go to **Settings**, select **Manual (Custom Size)** and then input the appropriate dimensions into the Width and Height boxes.



Frame Controls for manipulating Window settings

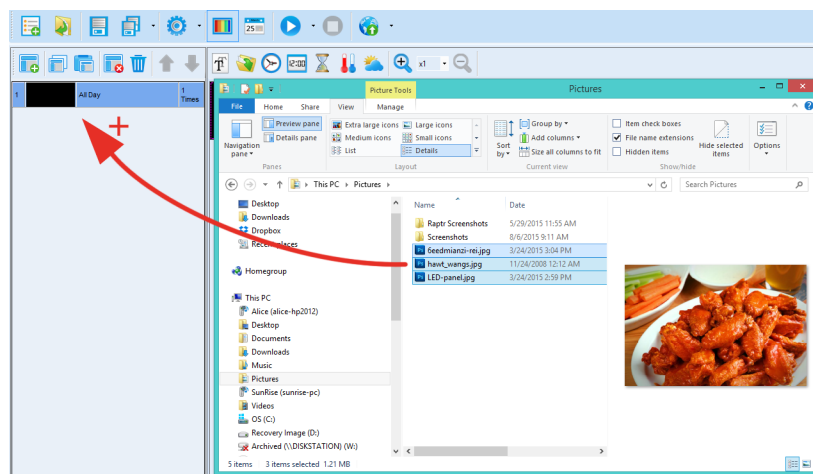
V1. - 2: Working with windows

Begin by choosing a **Window Layout** from the drop down menu. Make any needed adjustments to the size and position of the Window(s) using the **Window Controls** tools (highlight the Window you intend to alter, then adjust the size and position of the window using the **Window Control** buttons). You can also select transparency window layouts (these allow you to do things like overlay the weather feed on top of video) and you can create and save custom window layouts.



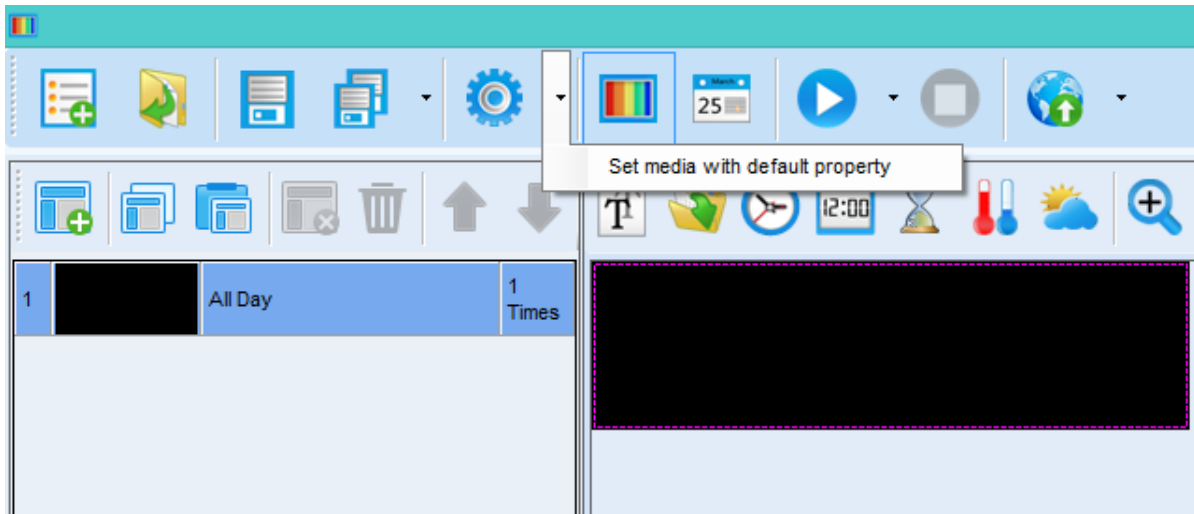
Input Menu for adding content to Windows

Next, add content to your Window(s) using the appropriate command from the **Input Menu**. You can adjust the parameters of your content by changing the respective settings inside of the **Properties Window**. This is where you'll find settings like font size, background color, time zones for the clock functions, display time for individual elements and any other granular aspects related to the type of media you've chosen for the selected Window.



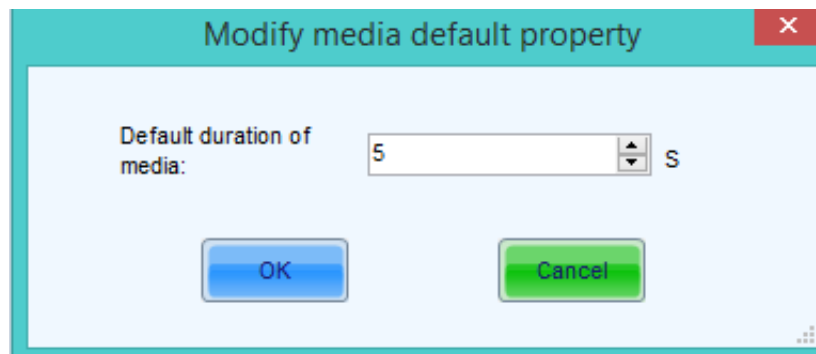
Dragging and dropping files

You can also drag and drop multiple files into the Frames section of the interface to easily create a playlist from individual media files. VersaNet will treat each individual file as it's own frame and it will assign your default play parameters (like the duration each frame shows up for) to each frame; you can easily create basic slideshows in this manner.



Playlist interface

To set your default Frame play time, click on the small black arrow to the right of the settings icon and select Set media with default property option.



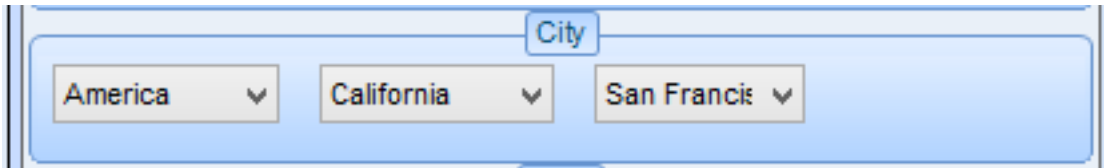
Default play time interface

Now adjust the duration to your desired time and click OK - every new Frame you make will by default be set to play for whatever amount of time you entered in this window.



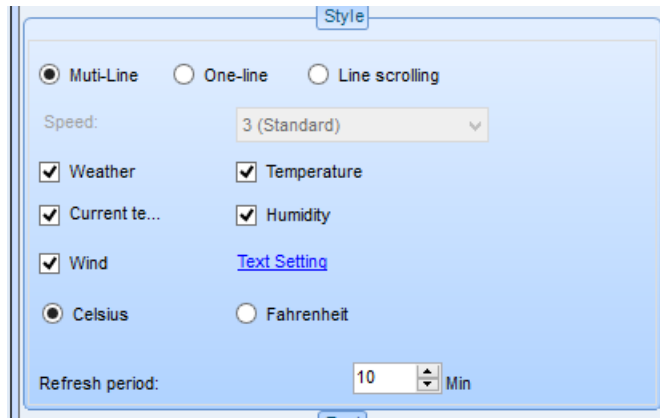
Add weather icon

There is one type of content that requires additional configuration in order to display correctly - Weather. The weather readings in VersaNet are fed via RSS directly from weather.com. By default VersaNet only allows you to select from major cities in each Country/State. If you require more localized weather, for example if you live in a small town, SunRise LED can add your local RSS feed to VersaNet and send you a simple file to add to your software. To add a Weather feed to your playlist, first select the weather icon from the content window.



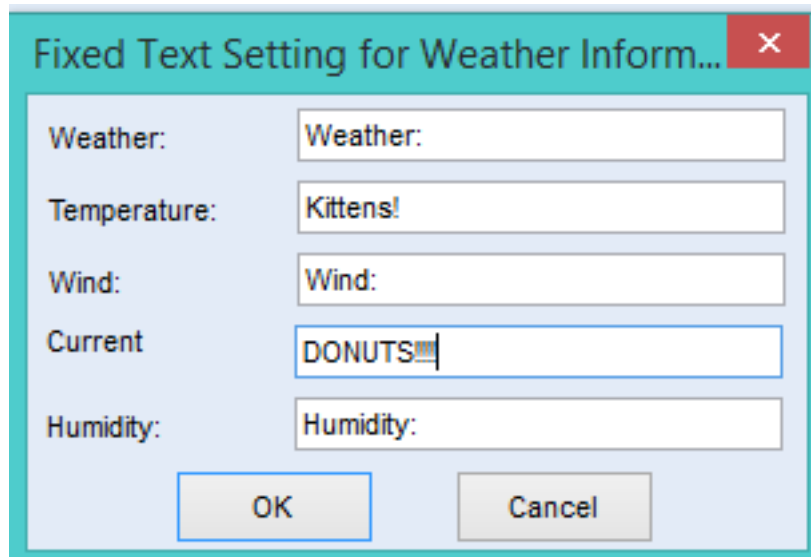
City selection

Next you'll need to set the parameters for your city using the City drop down menus.



Weather styling interface

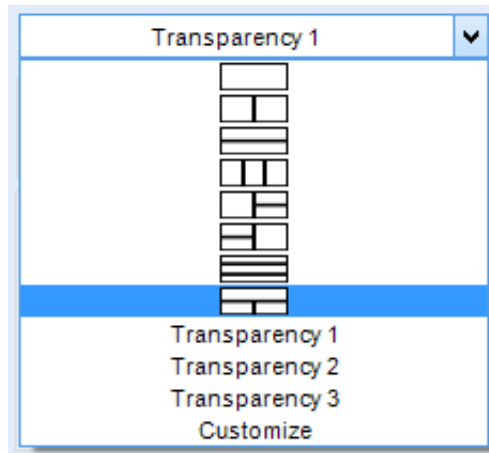
Then check only the boxes next to the actual weather values that you wish to display.



Weather field labels

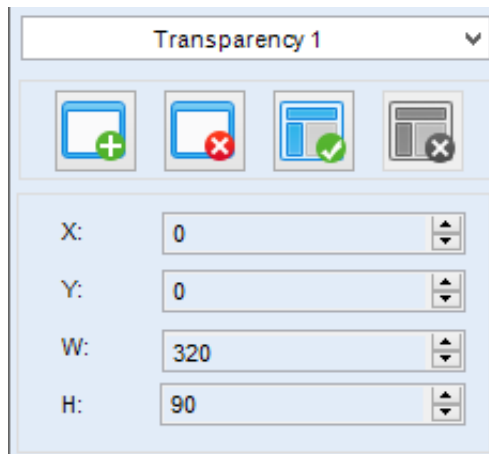
If you'd like to change the labels for your weather feed, click on Text Setting, then type your desired labels into the appropriate sections of the dialog box - NOTE you do not actually have to have labels, simply leave the window blank if you wish to have no label for a particular field.

VII. WORKING WITH TRANSPARENCIES



Transparency Windows

VersaNet allows custom window layouts with the ability to do transparent overlays on top of your standard media, like images and video. To use the transparency function, select one of the Transparency layouts from the window selection drop down menu.

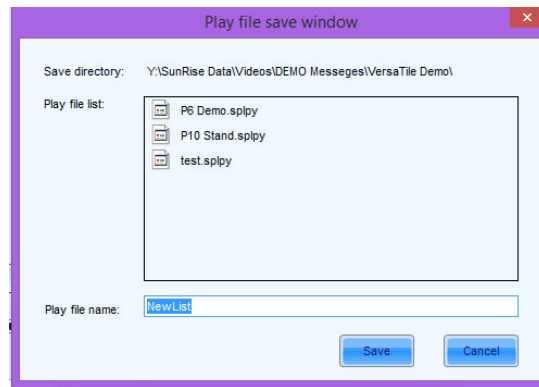


Transparency adjustment controls

By default, the “top” window will be the transparent window and the “bottom” windows will be the background of the transparent windows. You can add, delete, and save transparency windows using the icons found above the window layout selection. There are two ways to adjust the position and size of the transparent windows; you can use the X/Y/W/H windows to make exact adjustments or you can alternately double click on any window and use the “handles” to re size and move your window. VersaNet does not limit the amount of transparent windows you can have in one Frame - for example, you could layer time/weather/text on top of a video in a single Frame.

Once you are pleased with your first Frame you can add more Frames (and respectively, more windows) by clicking the **Add** button. Alternately, you can delete any Frame by highlighting it and then clicking the **Delete** button. Now is a good time to save your Playlist. It’s important to save your Playlist often to avoid any loss of information. To do so, click the **Save** button from the File Menu.

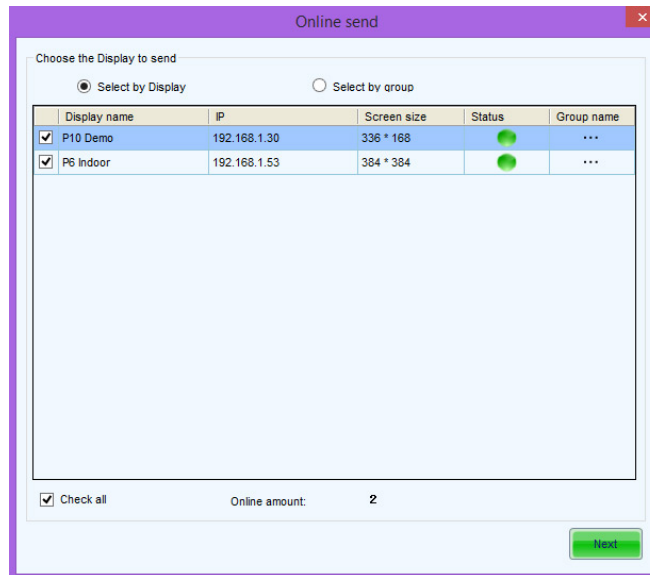
VIII. SENDING A PLAYLIST TO YOUR DISPLAY



Playlist save window

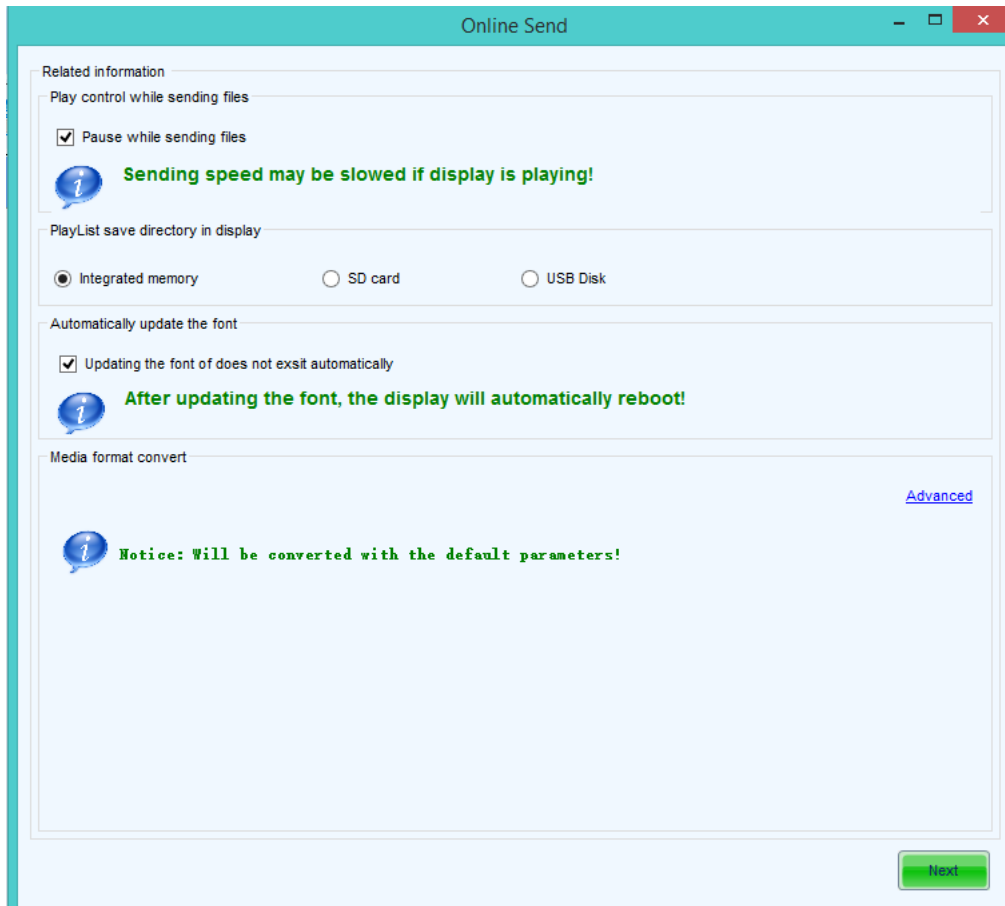
When you are ready to send the Playlist to your display click the **Send** button in the File Menu. If you haven't already saved your Playlist the software will ask you if you want to save. If you choose to save select a file name and hit **OK**.

The conversion parameters window will inform you that your Playlist will be converted with the default settings, hit **OK** if you do not require custom file conversion otherwise you can select **Advanced** and set custom transcode settings.



Online Send window

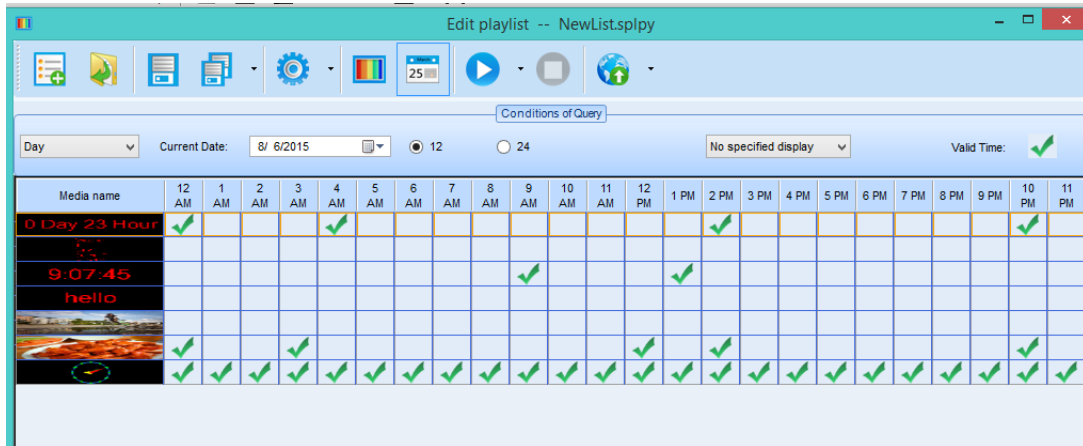
When the Online Send window opens, select the Display you intend to send the Playlist to, then hit the **Next** button. If you have more than one Display be careful to de-select any Displays that you do not intend to send this particular Playlist to.



Online send /media selection screen

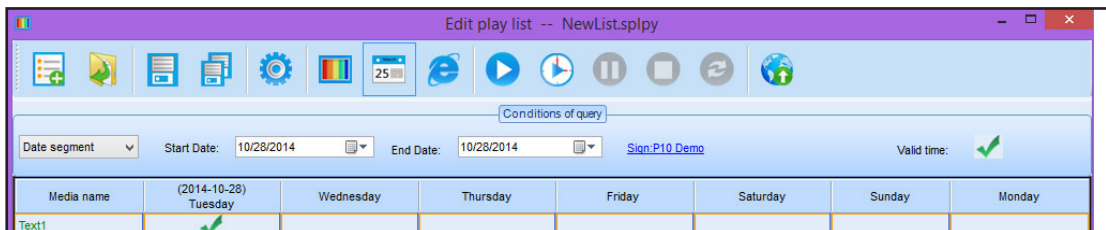
Now, select the destination for your Playlist. You can select from the Controller's **Integrated Memory**, **SD Card** or **U Disk**. It is recommended that you always select SD Card or U Disk for storage purposes as your Controller has a comparatively limited amount of storage space. If you do choose to use the Controller's Integrated Memory it is imperative that you always manage your storage capacity accordingly. This is your final confirmation window and your last chance to change any settings before you send the Playlist to your Display. Once you are sure that you are ready, hit the **Send** button.

IX. VIEWING YOUR PLAYLIST SCHEDULE WITH EDIT LIST



Playlist interface - Schedule View

In VersaNet you can view all of your Playlist scheduling information in one view. To enter this view select **Schedule** from the file menu. In this section of the software any green check marks mean the selected Display will be running a Playlist during the indicated Time/Day block. Each Playlist can be selected to display during specific Times, Days, and Months and you can create schedules that extend as far ahead in the future as you want.

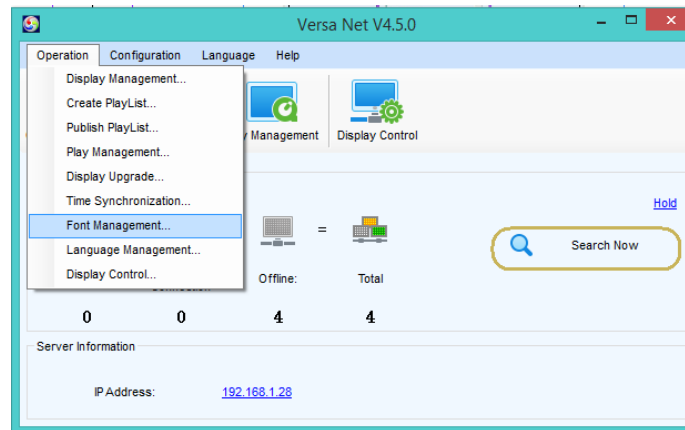


Schedule view; view selection drop down menus

To change the schedule overview between Day, Week, Time Frame and Year, toggle the drop down menus at the top left of the screen. If you have more than 1 Display you can select between your displays by clicking the underlined blue Display Name found next to the current date.

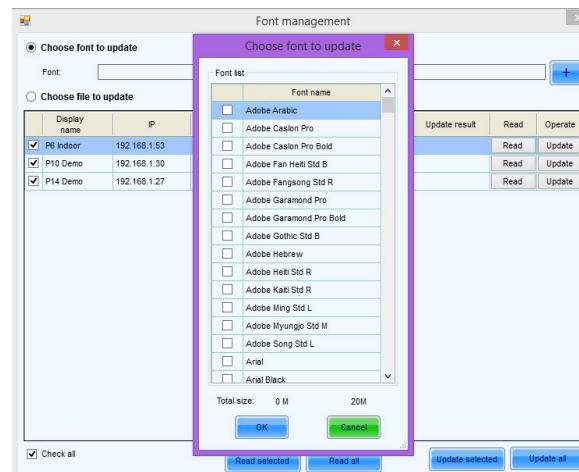
X. UPDATING FONT LIST IN VERSANET

The controller can be thought of like a small computer; in order for it to have the ability to display a font that font must first be installed. Although you can install any True Type font with VersaNet only the fonts that installed in the original software have been tested and proven to function correctly; untested fonts will sometimes display incorrectly so be sure to make a test message with a new font before you count on it displaying correctly. * NOTE - if you send a playlist without loading the fonts in it first, the controller will restart itself and there will be a delay in your playlist displaying.



Main VersaNet interface

To update your fonts in VersaNet first select **Operate** and then click **Font Management** from the drop down menu. Next click on the blue Plus button to bring up a list of the currently available fonts on your computer.

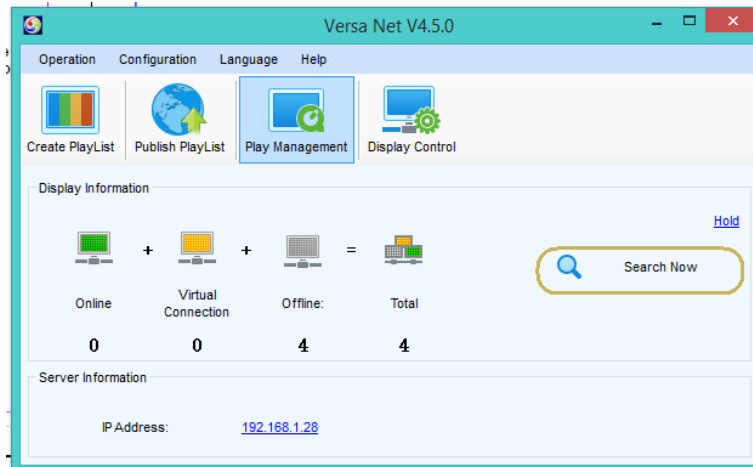


Add Font window

In the font window choose which fonts you wish to update by checking the box next to the font's name, then select **OK**. Finally, either make sure the display(s) you want to update is selected and click **Update Selected** or if you'd prefer to update all of your displays click the **Update All** button. Be sure to make a test message with your updated fonts to ensure that they will display correctly.

XI. VERSANET PLAY MANAGEMENT

VersaNet allows deeper control of your Playlists and Display Hardware through its Play Management screen. Options available through the Play Management screen include managing your storage space, reading play logs and remotely viewing your current Playlist.

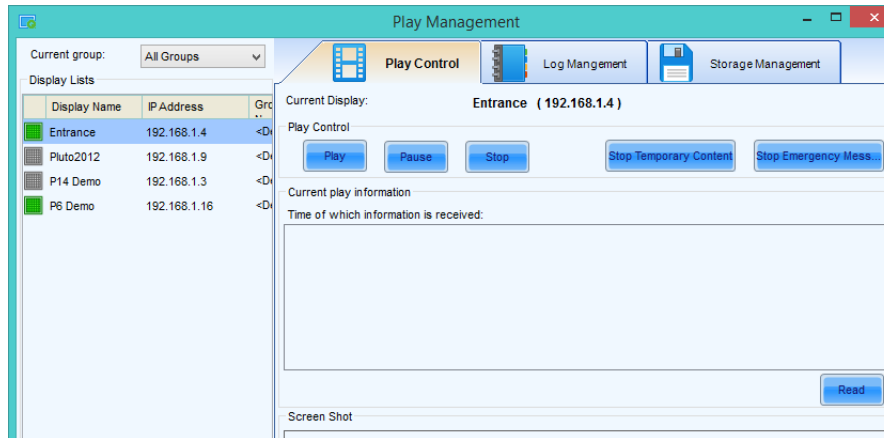


Main VersaNet interface

To access VersaNet's Play Management controls select the Play Management icon from the main VersaNet interface.

In the **Play Management** screen you'll notice a set of tabs on the right (**Play Control** - monitor what's currently playing on your display(s), **Log Management** - overview of your play logs, **Storage Management** - interface for controlling your controller's data storage). On the left side of the Play Management interface you'll see a list of your current displays. Anytime you wish to utilize the controls available to you in Play Management it's important to remember that you must have the Display you wish to manage highlighted in the left window.

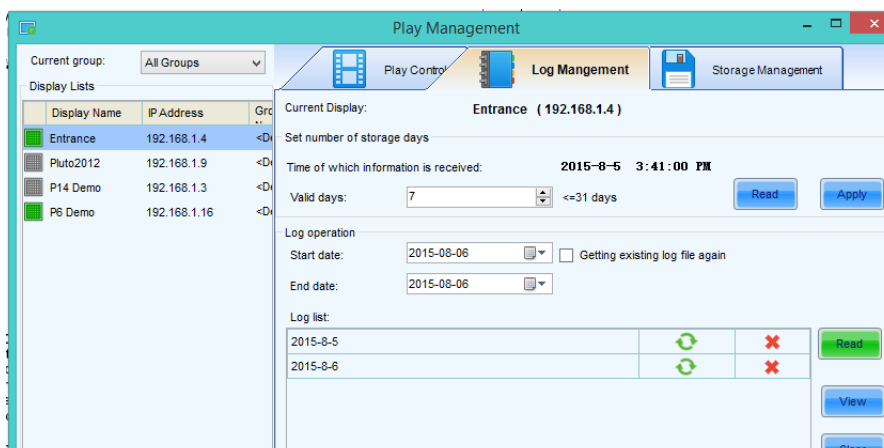
XI. - 1: Using Play Control



Play Control screen

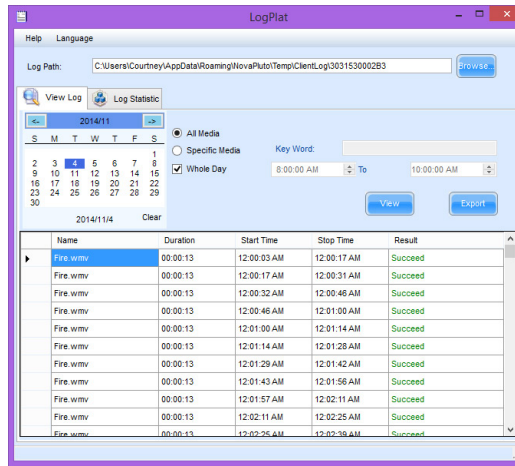
To view the **Play Control** screen select the Play Control tab from the Play Management interface. To control the Playlist first select the desired Display from the left. You can **Play**, **Pause** and **Stop** the Playlist using the corresponding buttons. You can list the currently playing Playlist by selecting your desired Display and clicking the Read button in the Currently Play Information section. Clicking the Read button in the Play Image section will show you a screenshot of what is playing on your Display at the time and clicking on the image itself will open a larger version in your default image viewer.

XI. - 2: Using Log Management



Log Management screen

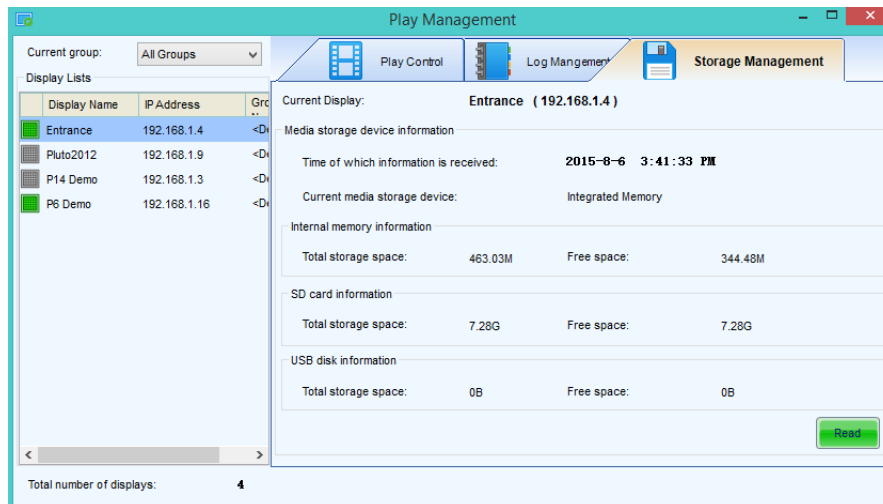
To enter the Log Management screen you must select the **Log Management tab** from the Play Management interface. With your Display selected you can set the number of days that your Display's play logs will be stored up to a total of 31. Clicking **Read** will tell you what's already set in your Display and adjusting the number in the small window then clicking the **Apply** button will apply the new setting to your Display. To see your log lists click on the **Read** button in the **Log List** window. Next select the desired log and click the **View** button to see the actual log itself.



Play Log window

In the Play Log window you can view, search and see detailed information about the media set to play inside of your Playlist. Selecting the **View Log** tab shows overall log data by date and allows you to **Search** form specific data using the search window. Selecting the **Log Statistics** tab shows detailed data about specific media in your Playlist including any failures and specific play times. You can Export an Excel spreadsheet of your log file from either screen by selecting the **Export** button and you can change the file path for stored logs by using the **File Path** controls.

XI. - 3: Using Storage Management

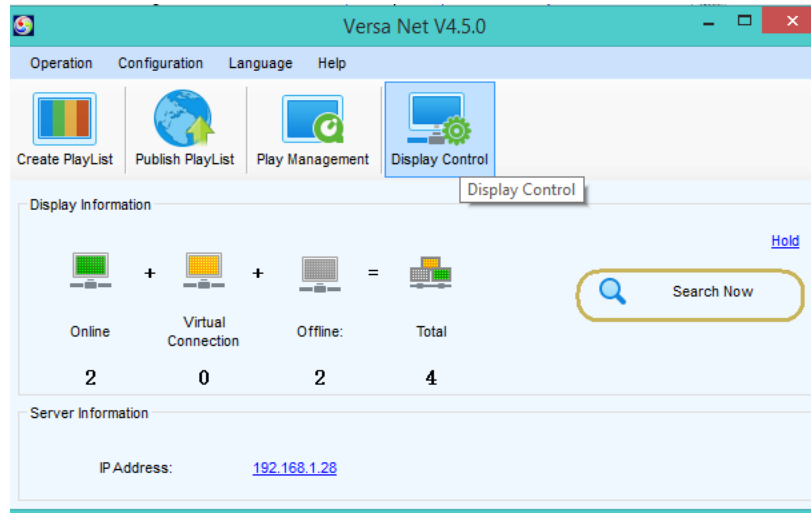


Storage Management window

Click on the Storage Management window to view data storage statistics for your Displays. Select your Display from the list on the left and click the **Read** button to gather data information from your desired screen. VersaNet allows you to store your Playlist data internally, on an SD card or on a U-Disk. The Storage Management window tells you how much room you have used up on each specific storage medium. You can also delete the data by clicking the **Delete All Media** button and you can delete only corrupted data by clicking on the **Delete Invalid Media** button.

XII. CONTROLLING YOUR HARDWARE WITH DISPLAY CONTROL

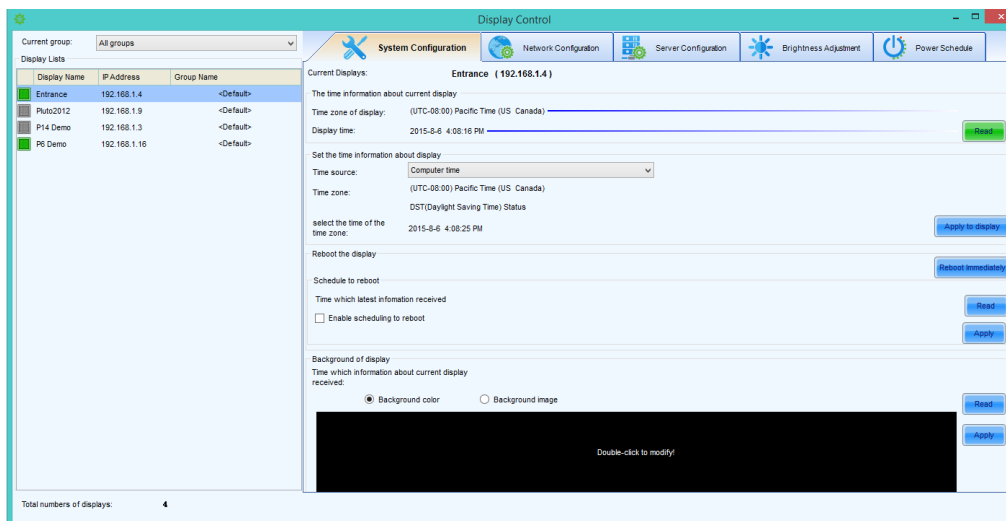
VersaNet's Display Control window provides you with a means of controlling the actual hardware of your SunRise LED system, such as setting your Display's System Time, Brightness scheduling and Power scheduling.



Main VersaNet interface

To access the Display controls click on the Display Control icon from the main Versanet interface.

XII. - 1: Using System Configuration



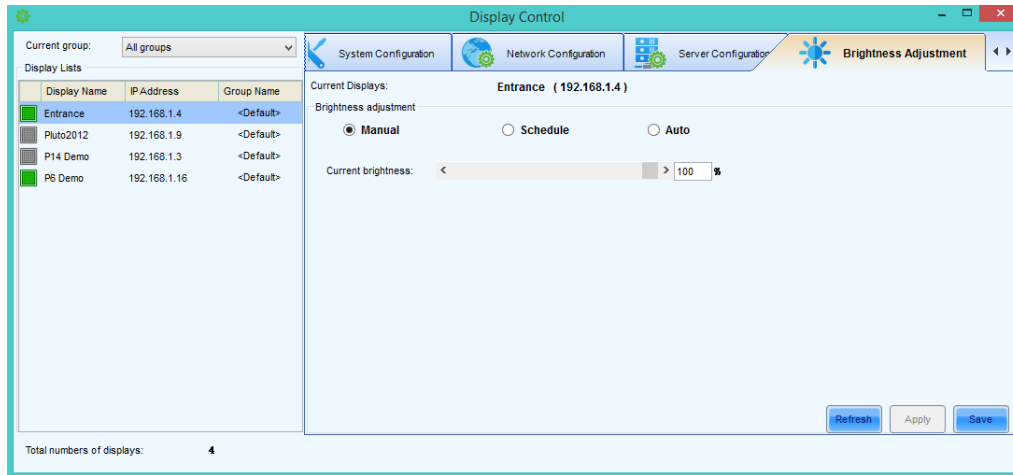
System Config screen

Display Control opens by default into the System Config screen. In this screen you can control your Display's Time and System Restart settings. Display's Time and System Restart settings. To see what your Display's current time is click on the **Read button** in the Current Display Time section.

If you need to change that setting select either Computer Time (your Display will use the current time from your computer) or Network Time (your Display will pull the time from the internet) and then click the **Apply To Display button**.

Sometimes it is necessary to schedule your Display to restart itself. To do this first make sure your desired Display is highlighted, check the box next to **Enable The Timed Restart**, choose the time of day you wish to schedule your Display to restart and click the **Apply button**. You can also manually restart your Display by clicking **Restart Now**.

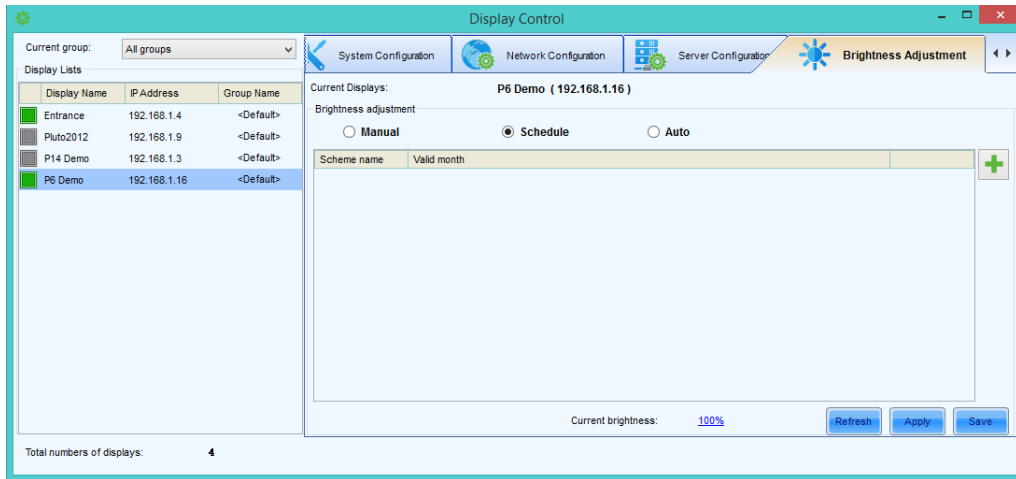
XII. - 2: Using the Brightness Controls



Brightness control screen

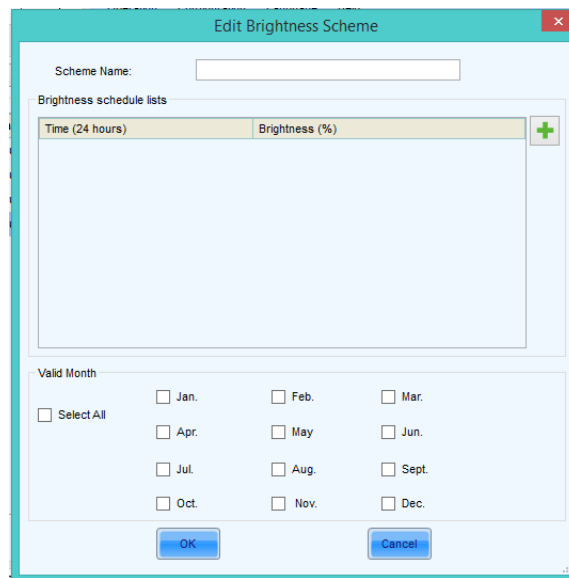
VersaNet allows for **Manual**, **Scheduled** and **Automatic** brightness controls. Manual controls require you to manually enter a brightness level. Scheduled brightness controls allow you to set timed parameters informing the display when to adjust the brightness based on a predetermined schedule. Automatic brightness controls require a light sensor (available for purchase through SunRise LED) and adjust brightness based on external ambient light levels.

To manually adjust your Display's brightness first make sure your target Display is selected from the pane on the left, then make sure the **Manual Radio Button is checked**. Next move the slider to adjust to your desired brightness setting and click the **Apply button**. **NOTE** - It is important to click the **Save button** when you are finished applying your brightness settings, if you do not save the setting it will be lost the next time you restart your hardware.



Scheduled Brightness settings

To configure Scheduled Brightness settings first select your Display from the pane in the left, then select the **Schedule radio button**. On the right hand side of the screen select the green **Plus** button to begin entering your first Scheduled Brightness parameters. You can add as many parameters as you wish.

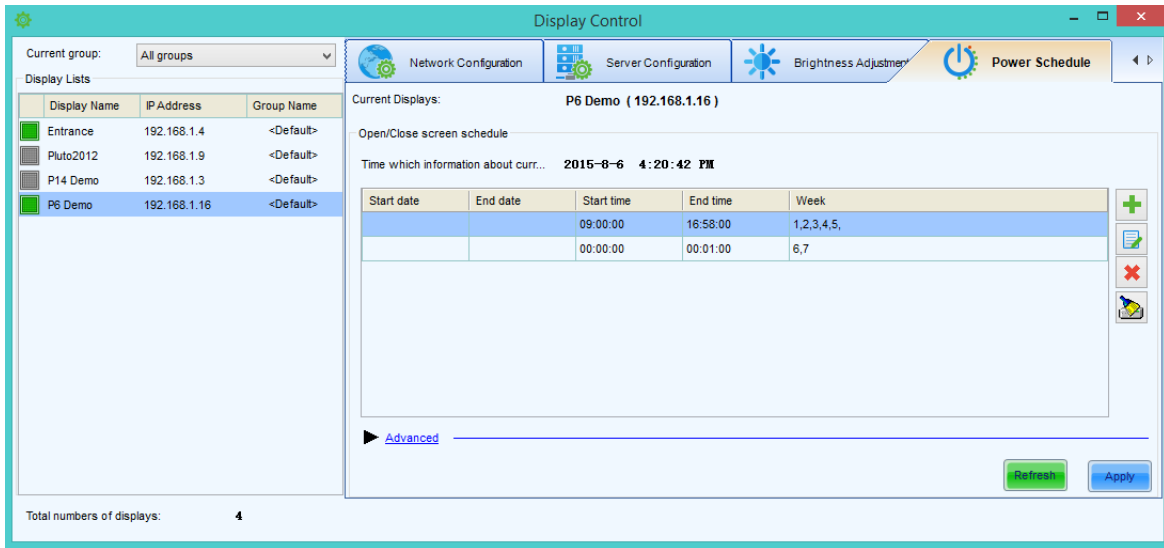


Edit Bright program window

To set the values for your Brightness parameters first type in a **name** for this parameter, then click on the green **Plus** button. Now enter your desired values for the **Time** you want the brightness to change at and the **brightness level** you want the Display to change to. For example, entering in a time of 15:30 and a brightness value of 40 would make your Display change it's brightness level to 40% at 3:30 p.m. Next enter any other parameters you need and select the months that you wish these brightness settings to be in effect, then hit the **Okay** button. You should now have a single brightness program listed.

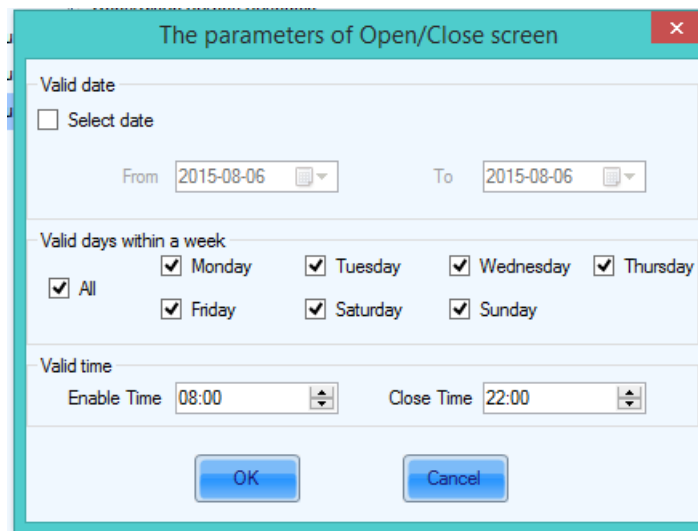
You can add as many brightness programs as you wish. The final steps are to hit the **Apply button** to apply the settings to your Display, then click the **Save button** to save the settings to the hardware. Congratulations! You have created your first Brightness Schedule.

XII. - 3: Using Power Scheduling



Power Scheduling window

By clicking on the **Power Schedule** tab in the Display Control window you will have access to Ver-saNet's power scheduling controls. You can schedule your Display to power off and on whenever you need it to. This scheduling works in the same way as scheduling brightness. First click on the **green plus button** to access the Power Scheduling parameters.



Brightness Parameters screen

Select the date, day of the week, and On time/Off time that you want your sign to power On/Off, then click the **OK** button. You will see a new entry in the list of Power Schedules. If you wish to add more you can do so by clicking the green **Plus** button. When you are satisfied with your Power Schedule click the **Apply** button.